



SPECIFICATION SHEET

Model #:	_____ Qty: _____
Project #:	_____
Consultant:	_____

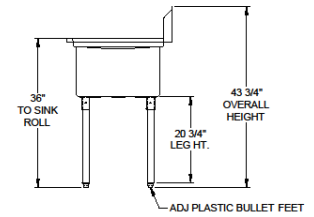
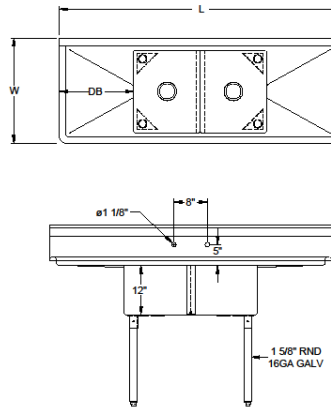
QUALITY FOOD SERVICE EQUIPMENT

ECONOMY SINKS



DIMENSIONS

2 bowls - 2 drainboards



MATERIAL

- ◆ 18GA 300 stainless steel fabricated
- ◆ Galvanized legs & gussets
- ◆ Plastic bullet feet

FEATURES

- ◆ 10"H backsplash with 2" return to wall
- ◆ 8" on center splash mount faucet holes
- ◆ 3-1/2" die-stamped drain opening
- ◆ 2 drainboards (1 on each side)
- ◆ Adjustable bullet feet

Model#	Bowl Size LxWxH	Length	Width	Drainboard Size
2SG-162012LR18	16" X 20" X 12"	68"	25-1/2"	18"
2SG-181812LR18	18" X 18" X 12"	72"	23-1/2"	18"
2SG-202012LR18	20" X 20" X 12"	76"	25-1/2"	18"
2SG-242414LR24	24" X 24" X 14"	96"	29-1/2"	24"